

# Elevate Your Workspace Style



# CARPET TILES



A modern interior scene featuring a wall with large, blue, textured panels. Two black, cylindrical wall sconces are mounted on the wall, casting a warm, yellow light. In the foreground, there is a grey armchair with a white cushion, a small round wooden table with a plant, and a grey ottoman. The floor is covered in a light-colored, textured carpet.

# **PRIME CARPET TILES PDF**





TE-721







TE-722







TE-723







TE-724







TE-722,724







TE-723,721





# Specifications

| STYLE                             | PRIME                           |
|-----------------------------------|---------------------------------|
| Fibre Composition                 | 100% POLYPROPYLENE              |
| Construction                      | Multi Level Scroll Loop         |
| Yarn Type                         | PP BCF                          |
| Dye Method                        | Solution Dye                    |
| Machine Gauge                     | 1/12                            |
| Stitch Rate                       | 44/10 cm                        |
| Pile Height (±5%)                 | 4 - 5 MM                        |
| Total Height (±5%)                | 7.5 MM                          |
| Pile Weight (±5%)                 | 700 g/m <sup>2</sup>            |
| Primary Backing                   | Non-Woven                       |
| Secondary Backing                 | Pvc reinforced with fibre glass |
| Pile Treatment                    | 3M Scotch Guard                 |
| Size                              | 50 x 50 cm                      |
| Tile per box                      | 20 pcs                          |
| Area per box                      | 05 sqm                          |
| Limited Warranty                  | 05 years                        |
| Recommended Installation Patterns | Quarter Turn/ Brick             |





# PERFORMANCE Specifications

|                     |                                  |
|---------------------|----------------------------------|
| Wear Classification | Moderate/medium/Heavy Commercial |
| Colour Fastness     | Passes                           |
| Flammability        | Passes                           |
| Radiant Flux        | Passes                           |
| Static Propensity   | Passes                           |

# SCOTCH GARD

Protection and Stain Release



ISO 9001:2000  
Certified Company

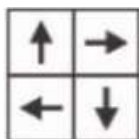


ISO 14001:2004  
Certified Company

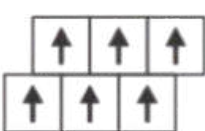


OHSAS  
18001:2007

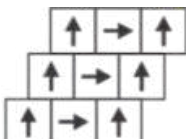
## RECOMMENDED INSTALLATION:-



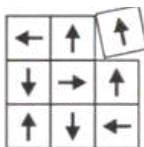
QUARTER  
TURNED



HORIZONTAL



HERRINGBONE



RANDOM







**TE-721**



**TE-722**



**TE-723**



**TE-724**

**Note:-**



**I) The photos are displaying only the design or pattern.**

**II) The color of the pasted sample represents only a specific section of the carpet tile.**