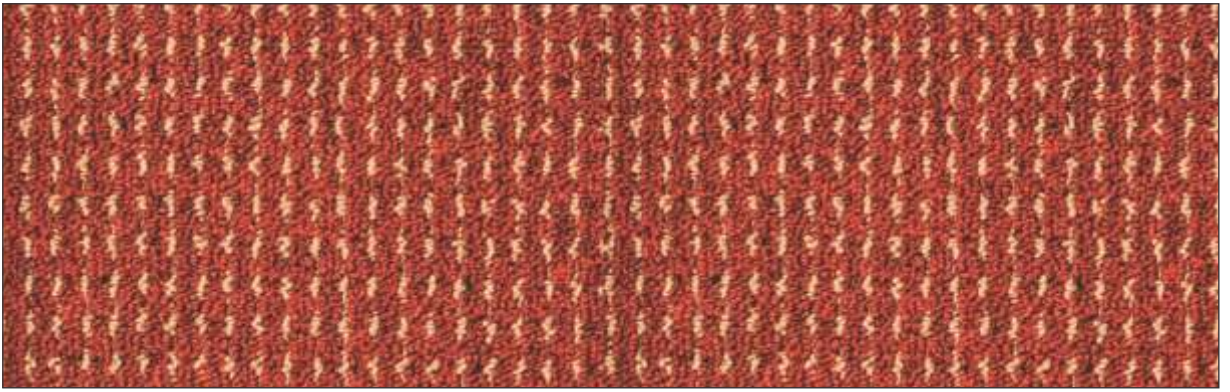


ENHANCE YOUR
HOME STYLE



STAR

Wall to Wall
CARPET

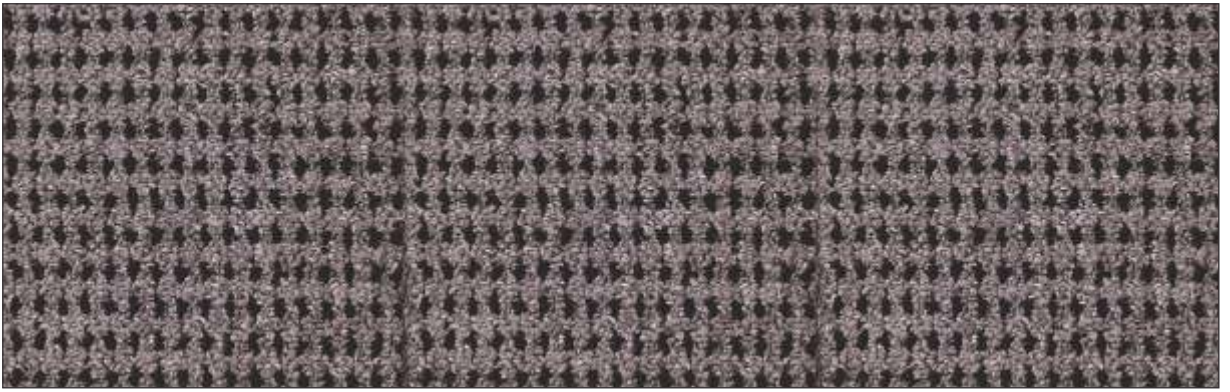


STAR - 107

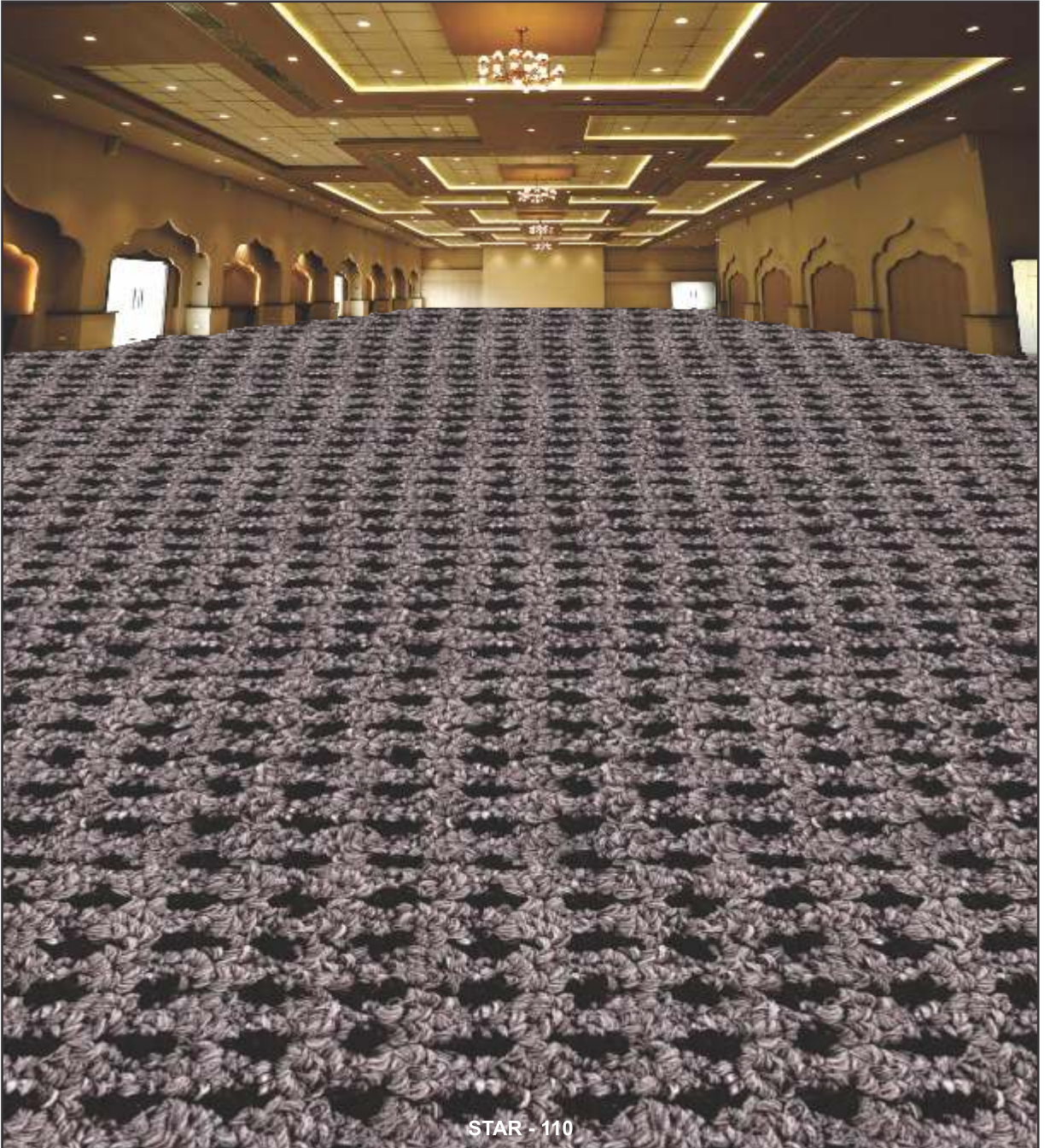


STAR - 107

* picture only for design illustration for actual colour refer to the product

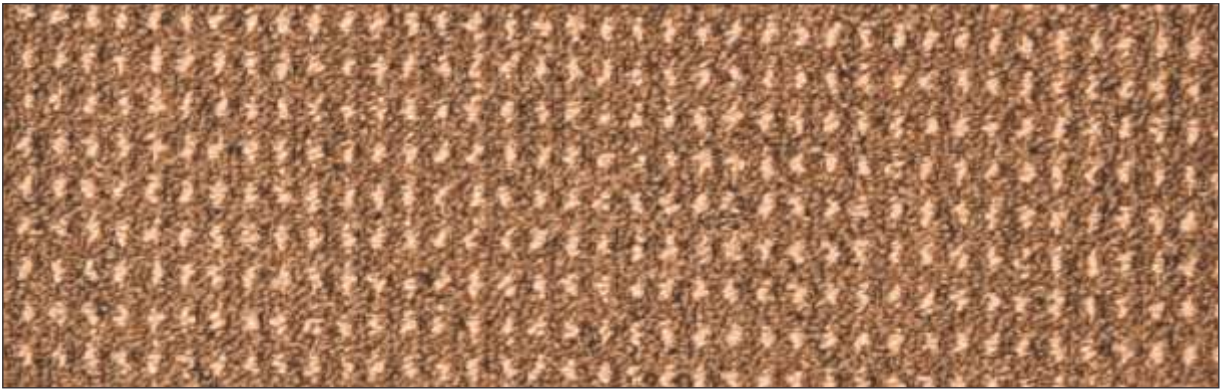


STAR - 110



STAR - 110

* picture only for design illustration for actual colour refer to the product

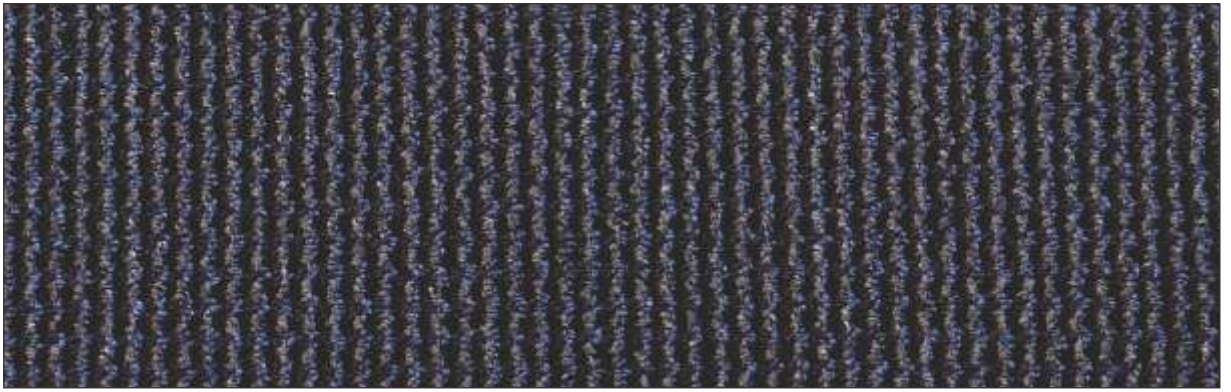


STAR - 115



STAR - 115

* picture only for design illustration for actual colour refer to the product



STAR - 116

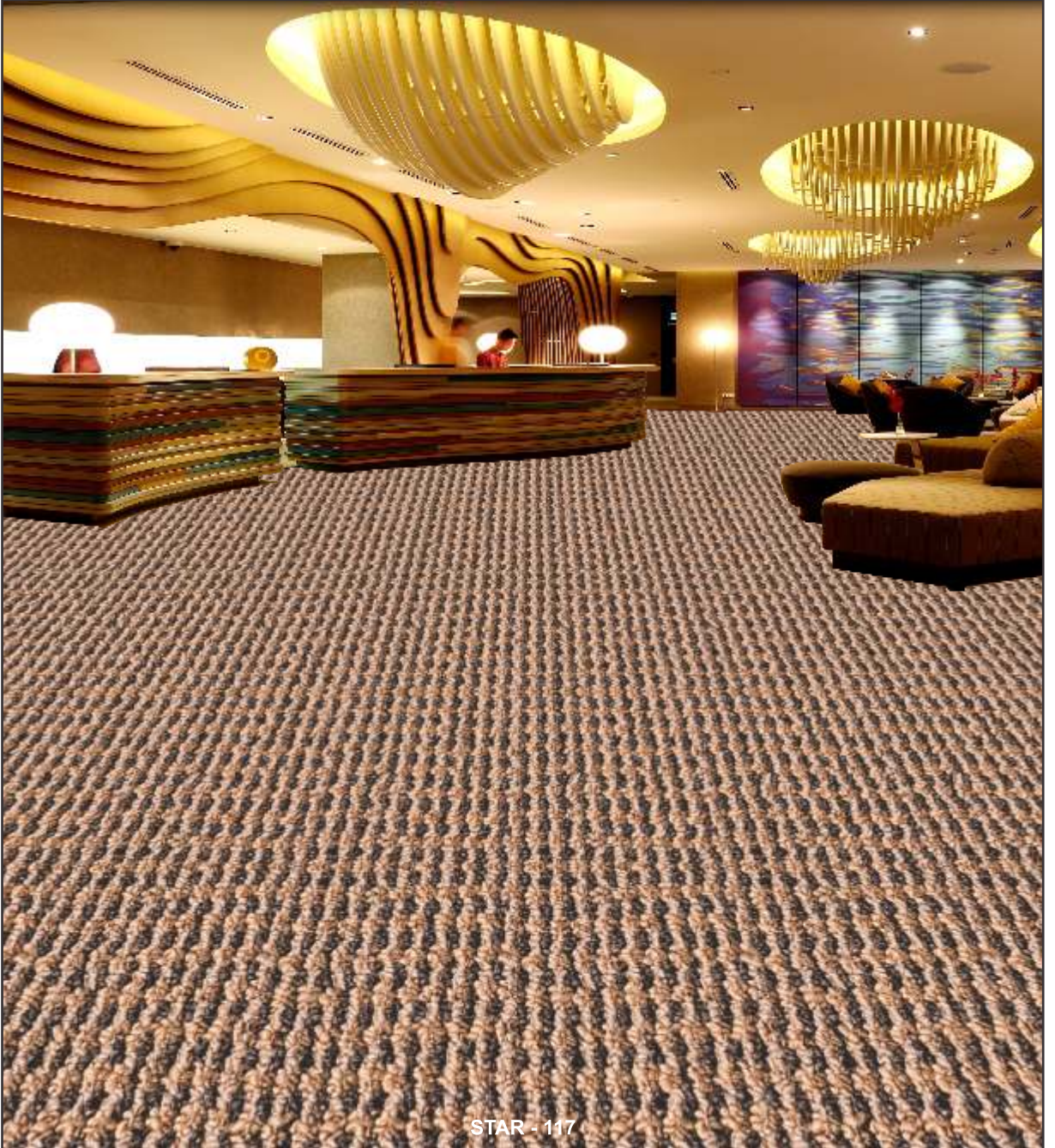


STAR - 116

* picture only for design illustration for actual colour refer to the product

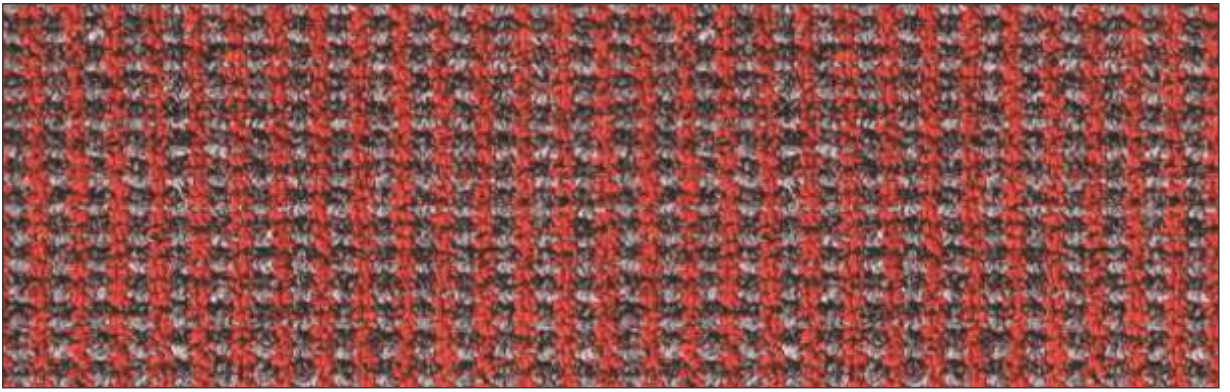


STAR - 117



STAR - 117

* picture only for design illustration for actual colour refer to the product



STAR - 118



STAR - 118

* picture only for design illustration for actual colour refer to the product

SPECIFICATION

STYLE	STAR
CONSTRUCTION	Level Loop Graphic
YARN TYPE	100% BCF Polypropylene
DYE METHOD	Solution Dyed
MACHINE GAUGE	1/10th
TUFTED PILE HEIGHT	4.5 MM
TUFTED PILE WEIGHT	500 gsm / Per Sq Mtr
TOTAL WEIGHT	1310 gsm / Per Sq Mtr
PRIMARY BACKING	Woven Polypropylene
SECONDARY BACKING	Felt Backing
ROLL WIDTH	4 / 2 / 3.66 mtr.
ROLL LENGTH	30 mtr.

